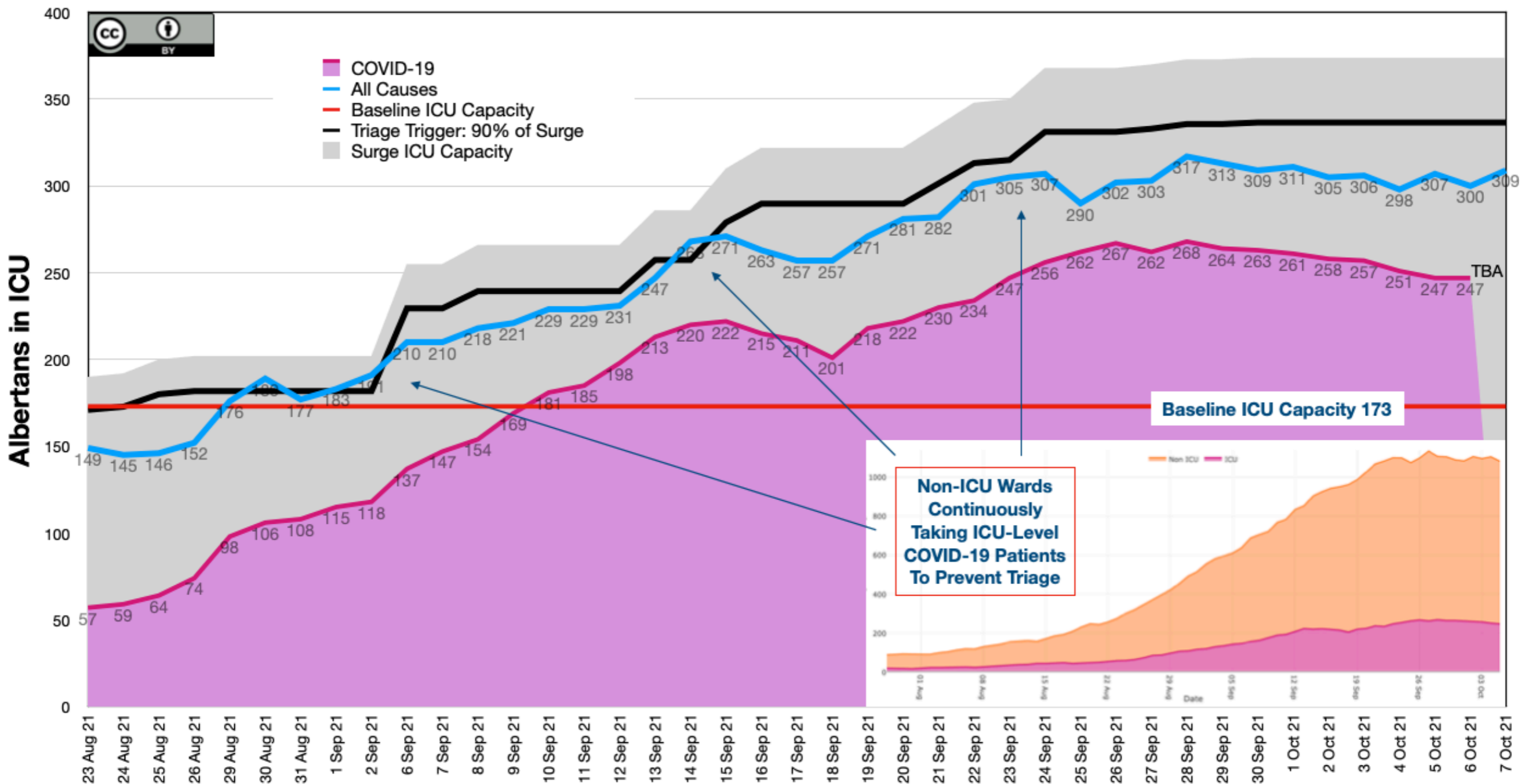


# ICU-Level Care in non-ICU Wards

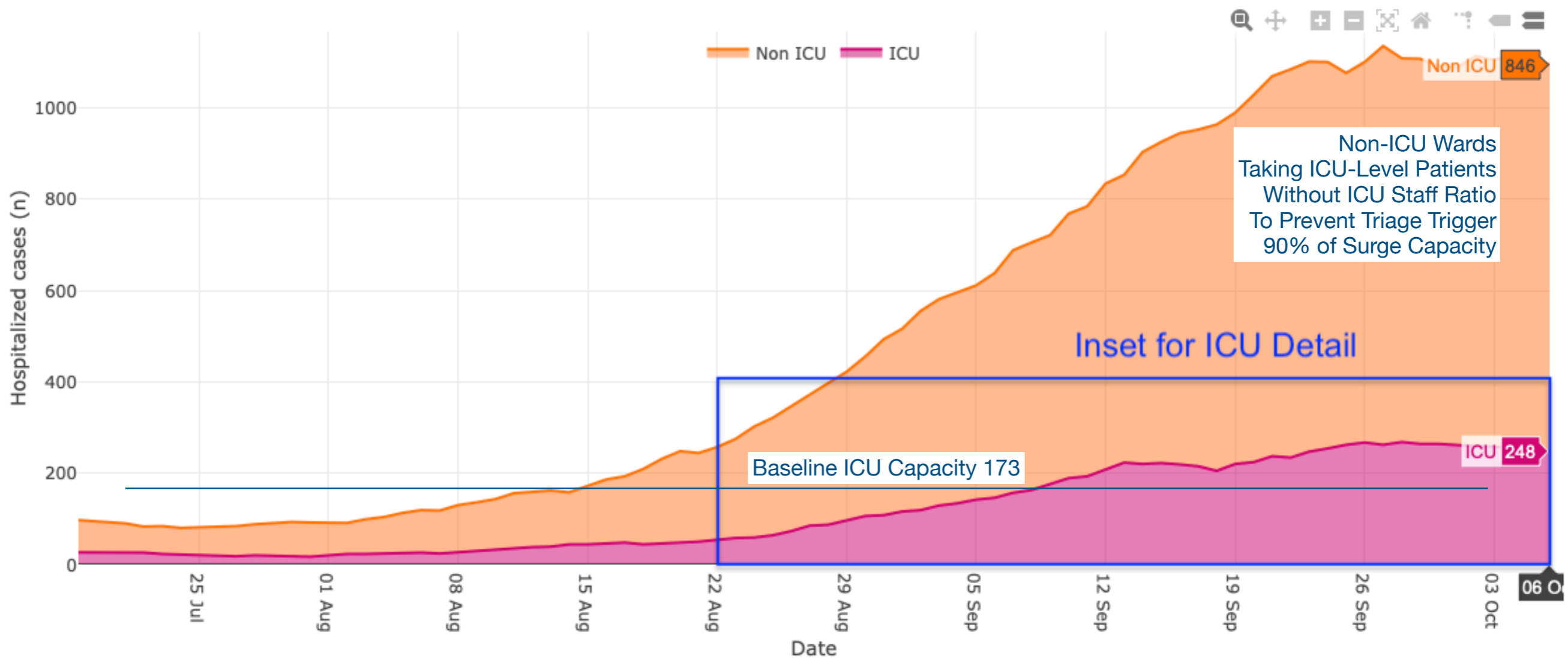
- Covid-19 + Other Causes Squeezing Triage Trigger
- Non-ICU Wards like Internal Medicine providing ICU-Level Care
- If there's time:
  - Heated High Flow Oxygen (eg Optiflow™) used in non-ICU Wards

@ziadfazel

# Exponential Growth of 4th Wave Squeezing Triage Trigger



Sources: AB Health & <https://www.albertahealthservices.ca/br/Page17593.aspx> | Graph: @ziadfazel | License: CC 4.0 CC-BY



Sources: <https://www.albertahealthservices.ca/br/page17593.aspx>  
 Graph: AB Health | Annotation @ziadfazel | License: CC 4.0 CC-BY

# Heated High Flow Oxygen Therapy via OptiFlow™ system



<https://www.bbc.co.uk/bitesize/guides/z3xq6fr/revision/2>

	Rest	Exercise
<b>Breathing rate</b>	12 breaths per minute	30 breaths per minute
<b>Tidal volume</b>	0.5 litres	3 litres
<b>Minute ventilation</b>	6 litres per minute	90 litres per minute

Clinical Outcomes	How does Optiflow work?
<ul style="list-style-type: none"> <li>• Deliver heated humidified Oxygen at higher flows</li> <li>• Reduce RR</li> <li>• Improve oxygenation</li> <li>• Reduce CO<sub>2</sub></li> <li>• Improve mucus clearance</li> </ul>	<ul style="list-style-type: none"> <li>• Heated 31-37° C</li> <li>• Humidified Gas at high flow rates</li> <li>• Flow rates from 30-60 L                             <ul style="list-style-type: none"> <li>• UIHC policy for adults start at 50L/m</li> </ul> </li> <li>• Adjustable FiO<sub>2</sub> from 21-100%</li> <li>• Large Bore Nasal Cannula or Trach Connection</li> </ul>

# Equipment

